

TOOLS TO KEEP SMILING

FKG RaCe - NiTi Canal treatment in continuous rotation

SAFE, SIMPLE AND EFFECTIVE!



NON-CUTTING SAFETY TIP

- Perfect control of the instrument
- Steers clear of lateral canals



ALTERNATING CUTTING EDGES

- No threading, nor blocking effect
- Lowest operation torque



IMPROVED EFFICIENCY

- Sharp cutting edges
- Better debris evacuation



ELECTRO-CHEMICAL TREATMENT

- Better resistance to torsion and metal fatigue
- Facilitates cleaning and sterilisation



SAFETYMEMODISC

- For mastering metal fatigue
- To count number of uses



Easy Race

The ideal combination!



Easy RaCe set to treat most of the Simple and Medium canals
1 x Endo Stand + 1 x Set Easy RaCe

- From only 2 to 5 instruments for a full shaping
- 2 optimised sequences within one set of instruments for Crown-Down or Single-Length technics

COMPATIBILITY

Our instruments are suitable for all micro-motors and controller systems.



FKG DENTAIRE
Swiss Dental Products

Try them and feel the difference!



FKG REF. - 99.7AA.10.01D.AN

FKG RaCe & SafetyMemoDisc

Rotary endodontic system

...Safe! ...Simple! ...Effective!

The FKG RaCe & SMD system is the simple and intelligent answer for endodontic treatments.

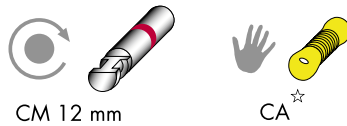


Easy RaCe set

Four exclusive technical innovations are at the root of FKG RaCe & SMD's success

1. Alternating cutting edges avoid the threading/blocking effect and have the advantages of an extremely low operating torque
2. Sharp cutting edges for improved efficacy with fewer instruments
3. SafetyMemoDisc for controlling NiTi fatigue
4. Electro-chemical treatment: better resistance to torsion and metal fatigue. Facilitates cleaning and sterilisation

Available Handles



Availability

Taper	SMD	Ø ISO														
		10	15	20	25	30	35	40	45	50	55	60				
PRE-RaCe 19 mm	.10															
	.08															
	.06															
RaCe 25 mm (21/31 mm)	.06															
	.04															
	.02															

- Set of individual nb. of 5 instruments
- Sequences Easy RaCe and Xtreme RaCe of 5 instruments each

Torque

Taper	SMD	Ø ISO														
		10	15	20	25	30	35	40	45	50	55	60				
PRE-RaCe 19 mm	.10															
	.08															
	.06															
RaCe 25 mm (21/31 mm)	.06															
	.04															
	.02															

Adjust speed anywhere between 300 and 600 rpm and keep it throughout treatment.

FKG SafetyMemoDisc

Thanks to the SafetyMemoDisc(SMD) system, you can prevent ruptures due to metal fatigue.

The SMD are attached onto the RaCe reamers as a standard feature; using them together with the SMD gauge and the decrementation table, you are the master of your instruments.



Curvature gauge



Each SMD has eight petals corresponding to a maximum of eight utilisations of the reamers.

According to the instrument's size/conicity and the complexity of the canal to treat, you will remove from 1 to 8 petals off of the SMD flange. The remaining petals indicate the possibility of further use.

Finally, the SMD are sterilisable and stay on the instruments. So that, you keep the utilisation's information all along the file life.

☆FKG RaCeMan

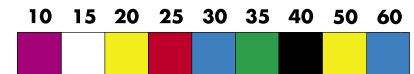
RaCe Man is a new manual NiTi file taking advantage of the FKG's innovative design with alternating cutting edges, which avoids threading on or blocking effect. RaCe Man is intended as a complement of continuous rotation instruments. It can be used to replace traditional K-files for manual patency or preflaring.

Taper: 0.02

Length: 25mm

Ergonomic handle: CA

Sizes (ISO):



Also available as assortment

Nb. ISO Ø 15-40



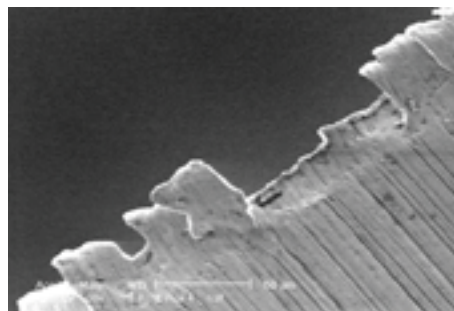
Electro-chemical treatment:

Endodontic instruments in nickel-titanium are machined by a grinding process, which leaves more or less rough traces (furrows and burrs) in the metal. Each imperfection represents a weak point, which, during extreme conditions of use, will become a point of fracture.

In order to push the limits of nickel-titanium fracture to the maximum, FKG applies an exclusive electro-chemical surface polishing.

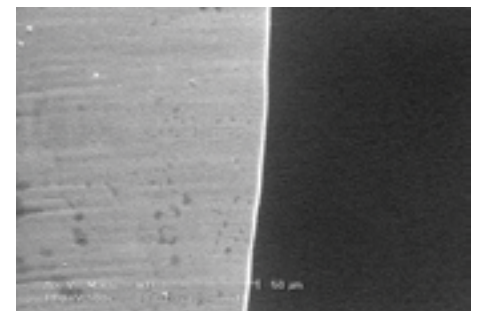
The views taken with an electronic microscope (magn. 500x) illustrate the improvement

of the surface condition of the instruments treated by this procedure. The result is an



Rough shape after traditional grinding

increase anywhere from 2 to 10 times in the resistance to torsion and metal fatigue.



Fine shape after electro-chemical treatment