



XP ENDO®
solutions

**EXPAND
YOUR
MIND**



ADAPTIVE. EASY. SAFE. EFFICIENT.

SAFE

up to **15 x**
more resistant to fatigue¹

than other systems
on the market

EASY

1 file

for shaping* | for cleaning**

35° ← 20°

20° → 35°

***XP-endo[®] Shaper**

****XP-endo[®] Finisher**

EFFICIENT

up to **98%**
bacterial reduction²

CONVENTIONAL
SYSTEMS

XP-ENDO
SOLUTIONS



Unprepared area

Prepared area

ADAPTIVE

up to **4 times**
less transportation³

with optimized
centering ability

"The unique adaptive properties of XP-endo Solutions are revolutionizing 3D canal management, allowing me to effectively treat at least 4 canals of different anatomical sizes with the same instrument."

MARTIN TROPE
BDS, DMD / Philadelphia **USA**

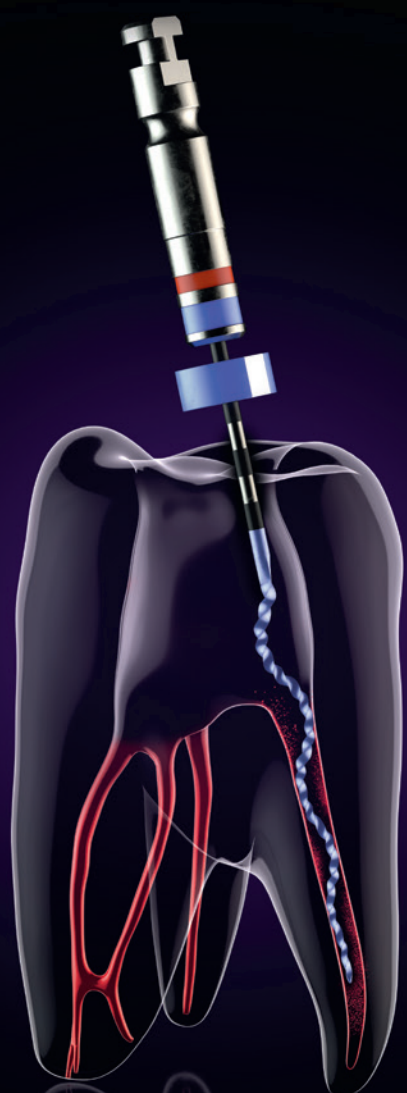
"XP-endo files' optimal expansion properties and sleek design adapts to the root canal using a minimally invasive approach that predictably cleans oval canals and complex anatomies."

GILBERTO DEBELIAN
DMD, PhD / Oslo **Norway**

XP ENDO®
shaper

SHAPING

Simplify your endo.
The unique one-file
system.



- Ability to shape from Ø 15 to Ø 30
- Designed with six cutting edges for optimal guidance



- Optimal expansion capacity up to 3x its core size
- Seamless adaptation to canal irregularities



- Excellent resistance to cyclic fatigue
- Superelasticity and extreme flexibility



- Unique patent design delivers unequalled debris removal
- Minimal stress applied to dentine walls

RETREATMENT

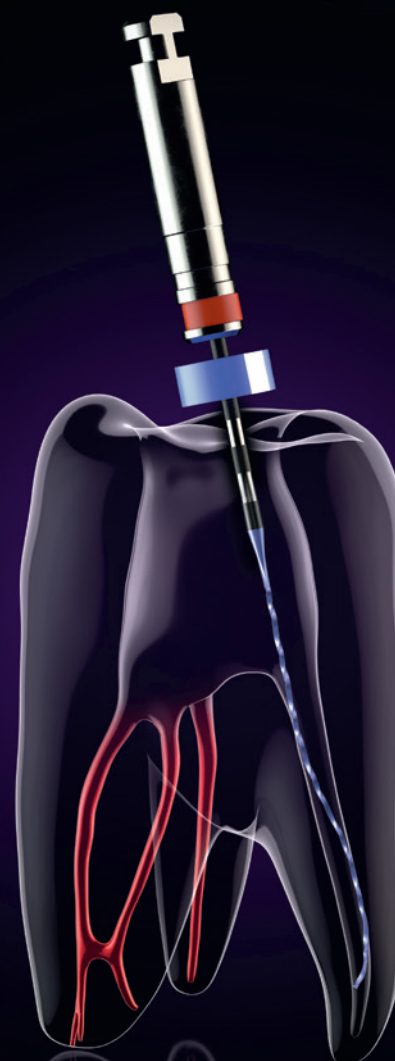
Also intended for retreatment,
1000-2500 rpm

Size: 30/.04
Speed: 800-1000 rpm
Torque: 1 Ncm

XP ENDO®
finisher

CLEANING

Improve your endo.
The universal mechanical
cleaning system.



- Revolutionary design provides enhanced ability to clean areas previously impossible to reach
- Exclusive tip



- Extreme expansion capacity optimization up to 100x its core size
- Seamless adaptation technology for all root canal morphologies



- Excellent resistance to cyclic fatigue
- Extreme flexibility and agility



- Uniquely designed for thorough debris removal
- Exceptional dentine preservation features

RETREATMENT

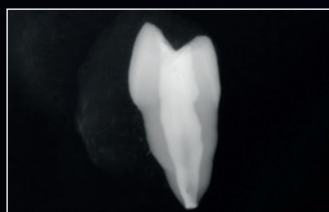
Available in 30/.00 for retreatment
(XP-endo® Finisher R)

Size: 25/.00
Speed: 800-1000 rpm
Torque: 1 Ncm

TREATMENT



XP-endo[®] Finisher



Radiograph showing the bucco-lingual aspect of the maxillary first premolar



Cross-section 1 mm from the apex



Cross-section 7 mm from the apex

© Dr. Hubert Gołębek (Poland)
and Dr. Martin Trope (USA),
All rights reserved

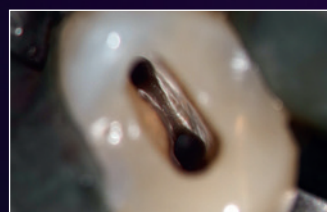
RETREATMENT



XP-endo[®] Finisher R



Photograph illustrating a case of retreatment before instrumentation



After instrumentation
no debris is seen



Root filling material removal during
retreatment case

© Dr. Gilberto Debelian (Norway)
and Dr. Klaus Lauterbach (Germany),
All rights reserved

"As opposed to traditional rotary files that impose their shape upon the canal, these revolutionary instruments adapt conservatively to the root canal anatomy!"

GUILLAUME JOUANNY
DDS / Paris France

	SEQUENCES					
	21 mm			25 mm		
Shaping Solution	XP-endo® Shaper Sequence : Blister packs of 6 instruments 2X (K-File 10/.02 + K-File 15/.02 + XP-endo® Shaper 30/.04)					
	S1.XB0.00.SAA.FK			S1.XB0.00.SAB.FK		
Shaping & Cleaning Solution	XP-endo® Shaper Plus Sequence : Blister packs of 4 instruments K-File 10/.02 + K-File 15/.02 + XP-endo® Shaper 30/.04 + XP-endo® Finisher 25/.00					
	S1.XB0.00.SAC.FK			S1.XB0.00.SAD.FK		
Retreatment Solution	XP-endo® Retreatment Sequence : Blister packs of 3 instruments DR1 30/.10 + XP-endo® Shaper 30/.04 + XP-endo® Finisher R 30/.00					
	S1.XB0.00.SAE.FK			S1.XB0.00.SAF.FK		
	REFILLS					
	BLISTER PACKS OF 3 INSTRUMENTS			BLISTER PACKS OF 6 INSTRUMENTS		
	21 mm	25 mm	31 mm	21 mm	25 mm	31 mm
XP-endo® Shaper	S1.XB0.00.0AJ.FK	S1.XB0.00.0AK.FK	S1.XB0.00.0AL.FK	S1.XB0.00.0AF.FK	S1.XB0.00.0AG.FK	S1.XB0.00.0AH.FK
XP-endo® Finisher	S1.XB0.00.0AC.FK	S1.XB0.00.0AA.FK	S1.XB0.00.0AP.FK	-	-	-
XP-endo® Finisher R	S1.XB0.00.0AE.FK	S1.XB0.00.0AD.FK	S1.XB0.00.0AQ.FK	-	-	-

- Azim AA, Tarrosh M, Azim KA, Piasecki L.** Comparison between Single-file Rotary Systems: Part 2—The Effect of Length of the Instrument Subjected to Cyclic Loading on Cyclic Fatigue Resistance. J Endod. 2018 Dec; 44(12): 1837-1842.
Vaz-Garcia ES, Vieira VTL, Petitot NPDSF, Moreira EJJ, Lopes HP, Elias CN, Silva EJNL, Antunes HDS. Mechanical Properties of Anatomic Finishing Files: XP-Endo Finisher and XP-Clean. Braz Dent J. 2018 Apr-Jun; 29(2):208-213.
Keskin C, Inan U, Guler DH, Kalyoncuoglu E. Cyclic Fatigue Resistance of XP-Endo Shaper, K3XF, and ProTaper Gold Nickel-titanium Instruments. J Endod. 2018 Jul; 44(7): 1164-1167.
Silva EJNL, Vieira VTL, Belladonna FG, Zuolo AS, Antunes HDS, Cavalcante DM, Elias CN, De-Deus G. Cyclic and Torsional Fatigue Resistance of XP-endo Shaper and TRUShape Instruments. J Endod. 2018 Jan; 44(1): 168-172.
Adiguzel M, Isken I, Pamukcu II. Comparison of cyclic fatigue resistance of XP-endo Shaper, HyFlex CM, FlexMaster and Race instruments. J Dent Res Dent Clin Dent Prospects. 2018 Summer; 12(3): 208-212.
Elnaghy A, Elsaka S. Cyclic fatigue resistance of XP-endo Shaper compared with different nickel-titanium alloy instruments. Clin Oral Investig. 2018 Apr; 22(3): 1433-1437.

- Azim AA, Aksel H, Zhuang T, Mashtare T, Babu JP, Huang GT.** Efficacy of 4 Irrigation Protocols in Killing Bacteria Colonized in Dentine Tubules Examined by a Novel Confocal Laser Scanning Microscope Analysis. J Endod. 2016 Jun; 42(6): 928-34.

- Hassan R, Roshdy N, Issa N.** Comparison of canal transportation and centering ability of Xp Shaper, WaveOne and Oneshape: a cone beam computed tomography study of curved root canals. Acta Odontol Latinoam. 2018 Jun; 31(1): 67-74.

**ENDO
DONE!**

www.fkg.ch/xpendo

FKG Dentaire Sàrl
Le Crêt-du-Loche 4
2322 Le Crêt-du-Loche
Switzerland
T +41 32 924 22 44

info@fkg.ch
www.fkg.ch

