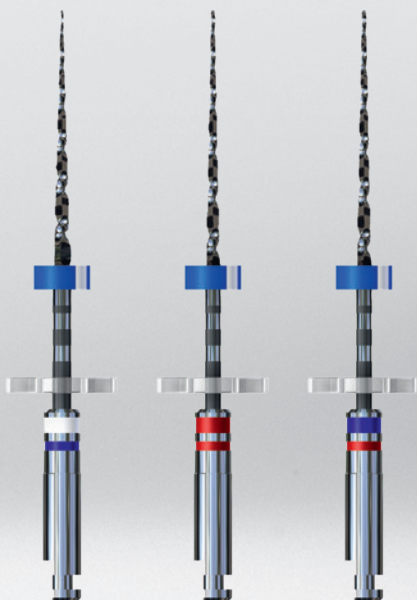




FKG
swiss endo



EN

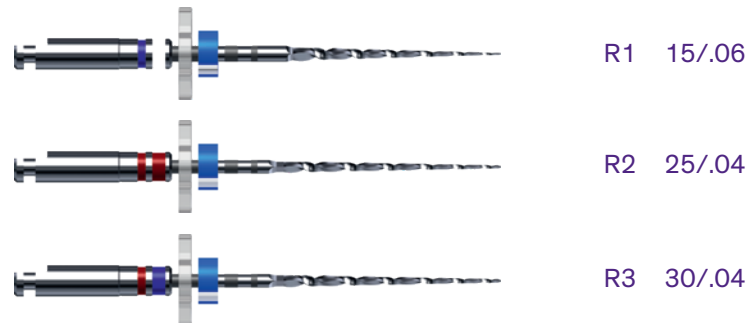
iRace
Quick, effective and safe

► The iRace Sequence

This sequence is really easy to use, economic and enables treatment of a majority of canals with just three instruments.

iRace sequence

Thanks to their exclusive characteristics, only three iRace NiTi rotary instruments are needed to treat the majority of cases (straight, slightly curved or wide canals). The iRace sequence allows preparation up to a diameter of ISO 30/.04. With its ease of use and manipulation, it results in considerable time savings. This sequence can be delivered in a sterile blister.



Complementary iRace Plus kit

In addition to the basic sequence, two highly flexible instruments (with taper of .02) allow treatment of more difficult cases (highly curved, narrow or calcified canals). This kit can be delivered in a sterile blister.

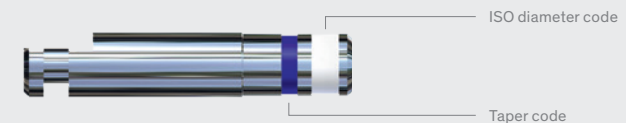


► Description

Cl metal handle for contra-angle

The aim is to provide easy identification of the ISO diameter (wide ring) and taper (narrow ring). The information remains visible when the instrument is inserted in the head of the contra-angle.

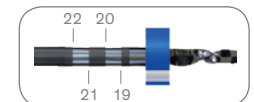
- Handle length 12 mm, stainless coating, paint marking of ISO and taper codes



Depth marks

On instruments of length 21/25/31 mm

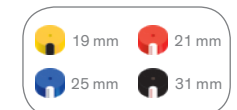
- Allow determination of the instrument's position with X-ray and control of the working length



Silicone endo stop

To mark working length, radiopaque

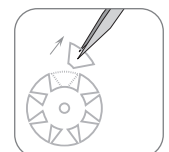
- The stroke identifies the original tip direction in the root canal (stainless steel instruments)
- ISO Colours - to indicate instruments' length



SafetyMemoDisc (SMD)

To master fatigue and number of uses

- After each use remove 1 petal for **S**imple cases, 2 petals for **M**edium cases, 4 petals for **D**ifficult cases
- Discard the instrument when all petals have been removed

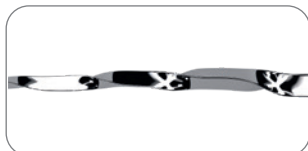


► Exclusive

Elimination of screwing-in effect

Alternating cutting edges

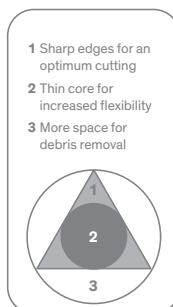
- The exclusive **patented file design** avoids screwing-in effect and allows a **better control** of the instrument's progression



Optimal cutting efficiency

Triangular cross-section with sharp edges

- **Cuts better and faster**, without any pressure (1)
- The smaller core grants a **higher flexibility** (2) and allows a better progression in curved canals
- **More space for debris removal** (3), improving debris evacuation to avoid instrument blocking



Exclusive rounded safety tip

Perfect centering of the instrument in the canal

- Bypasses irregularities and **avoids lateral canals**
- **Less risk of perforations** and ledges



Electrochemical polishing

Enhanced resistance against fatigue and corrosion

- The treatment **eliminates surface imperfections**, reducing drastically the risk of weak points (micro-cracks)
- The resulting shiny surface **allows better cleaning and disinfection**, improving the sterilization process



► Protocols

Golden rules

Speed : 600 rpm
Torque : 1.5 Ncm

- Ample to-and-fro movements;
- Let the instrument do the work, with a light touch;
- Work for 3-4 seconds at a time, then remove, clean the file and irrigate the canal.

iRace: 3 instruments

For most cases (straight, slightly curved and/or large canals)

1. Insert R1, in rotate mode, until it reaches the working length (WL);
However if R1 cannot reach the WL, do not force it; proceed to the iRace Plus protocol step 1;
2. Continue shaping with R2 up to the WL;
3. Finish the preparation with R3 up to the WL.

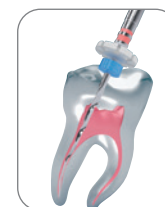
R1 15/.06



up to WL



R2 25/.04



up to WL



R3 30/.04



up to WL



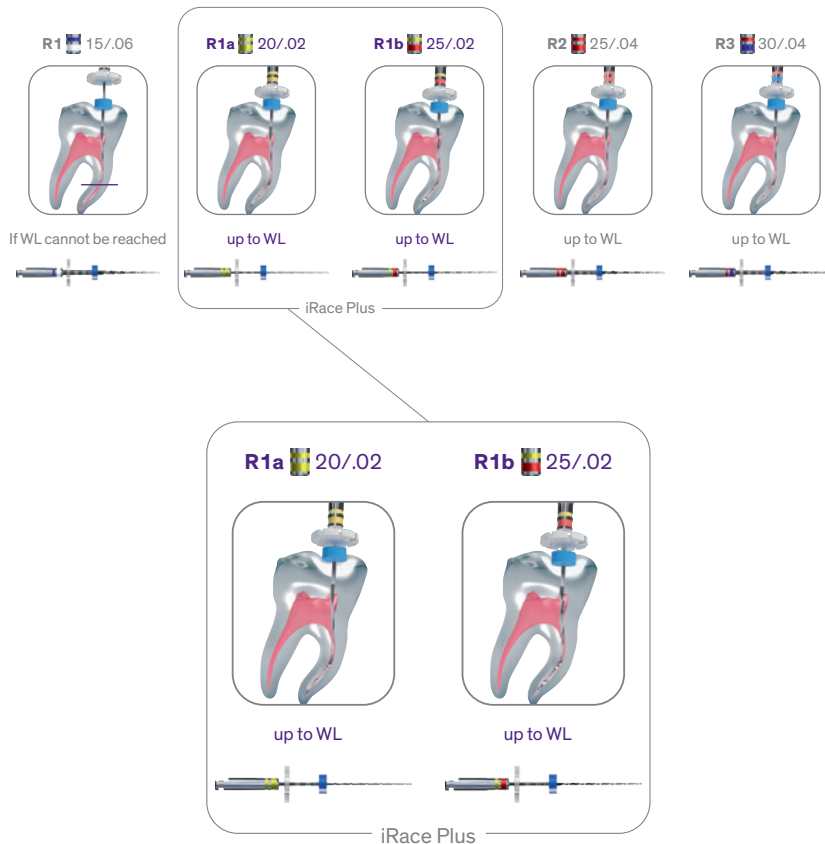
For bigger apical size preparation, please connect to www.fkg.ch to find the full range of FKG instruments.

iRace Plus: 2 instruments

For difficult cases (severely curved, narrow and/or calcified canals)

Continued from iRace protocol step 1

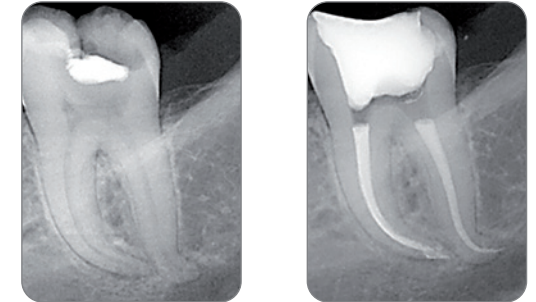
1. Use R1a up to the WL;
2. Continue shaping with R1b up to the WL;
Once you reach the WL, start over from iRace protocol step 2.



► Clinical cases

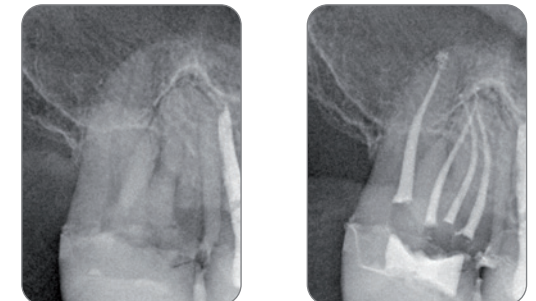
Case 1

Endo treatment of tooth 47 with the iRace sequence: R1, R2 and R3. Curvatures have been fully preserved.



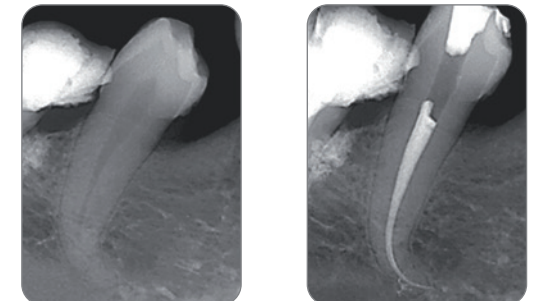
Case 2

Endo treatment of tooth 16 with 4 distinct canals. Palatine canal was shaped with the iRace sequence. The vestibular canals were shaped with the help of iRace Plus: R1, R1a, R1b, R2 and R3.



Case 3

Endo treatment of tooth 34 which has a severe apical curvature. The canal was shaped with iRace and iRace Plus: R1, R1a, R1b, R2 & R3. The natural curvature was preserved.





FKG Dentaire Sàrl

Founded in Switzerland in 1931, FKG Dentaire Sàrl gained a new momentum in 1994, the year Jean-Claude Rouiller took over the reins of the company.

He propelled FKG to the forefront in the development, manufacturing and distribution of dental products destined for general practitioners, endodontists and laboratories.

The FKG strategy is centered on innovative high-precision products and the creation of machines designed specifically for the dental field. Its aim is to offer solutions that meet the most demanding needs of end users.

In 2011 the son of Jean-Claude Rouiller, Thierry, succeeded to the head of the company. Through his

incentive, the network of distributors has expanded significantly and allowed FKG to make its products available in over 100 countries worldwide.

In 2012, the Swiss Venture Club rewarded FKG for its dynamism, high product quality, and its continuing innovation.

Equipped with a clean room since 2013, FKG is now developing a range of sterile products.

In 2013 and 2014 the company unveiled state-of-the-art training centers in La Chaux-de-Fonds, Dubai, and Oslo.

FKG Dentaire is certified according to international norms and regulations.



FKG Dentaire Sàrl, Le Crêt-du-Loche 4, 2322 Le Crêt-du-Loche, Switzerland
T +41 32 924 22 44, info@fkg.ch, www.fkg.ch