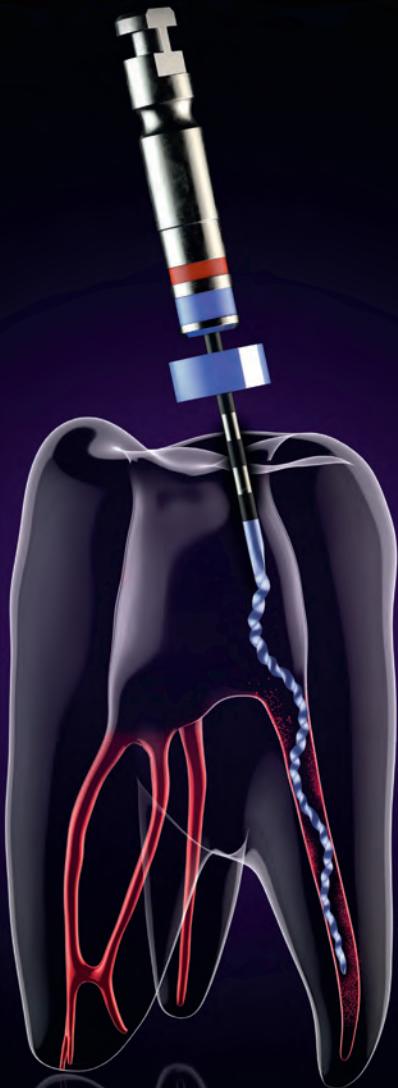


## SHAPING

Simplify your endo.  
The unique one-file  
system.



- Ability to shape from Ø 15 to Ø 30
- Designed with six cutting edges for optimal guidance



- Optimal expansion capacity up to 3x its core size
- Seamless adaptation to canal irregularities



MaxWire<sup>®</sup>

- Excellent resistance to cyclic fatigue
- Superelasticity and extreme flexibility



- Unique patent design delivers unequalled debris removal
- Minimal stress applied to dentine walls

Size : 30/.04  
Speed : 800-1000 rpm  
Torque : 1 Ncm

Availability: Refills in 21/25/31 mm  
Sequences in 21/25 mm  
(more information on [www.fkg.ch/xpendo](http://www.fkg.ch/xpendo))

## RETREATMENT

Also intended for retreatment,  
1000-2500 rpm

# XP ENDO<sup>®</sup> solutions

## TREATMENT



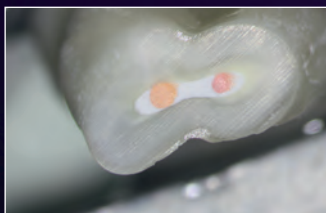
**XP-endo<sup>®</sup> Finisher**



*Radiograph showing the bucco-lingual aspect of the maxillary first premolar*



*Cross-section 1 mm from the apex*



*Cross-section 7 mm from the apex*

© Dr. Hubert Gołębek (Poland)  
and Dr. Martin Trope (USA),  
All rights reserved



**XP-endo<sup>®</sup> Shaper**

[www.fkg.ch/xpendo](http://www.fkg.ch/xpendo)

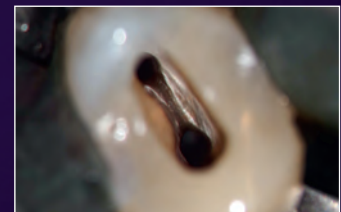
## RETREATMENT



**XP-endo<sup>®</sup> Finisher R**



*Photograph illustrating a case of retreatment before instrumentation*



*After instrumentation  
no debris is seen*



*Root filling material removal during  
retreatment case*

© Dr. Gilberto Debelian (Norway)  
and Dr. Klaus Lauterbach (Germany),  
All rights reserved